

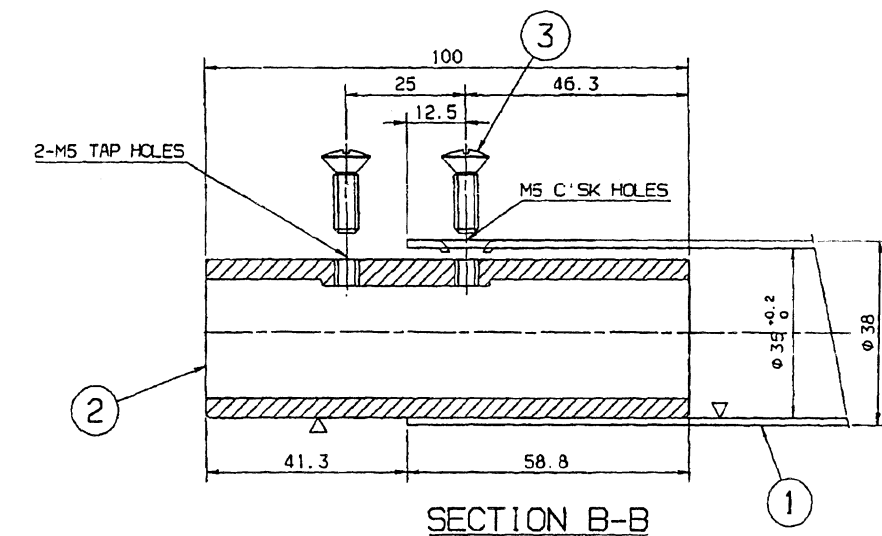
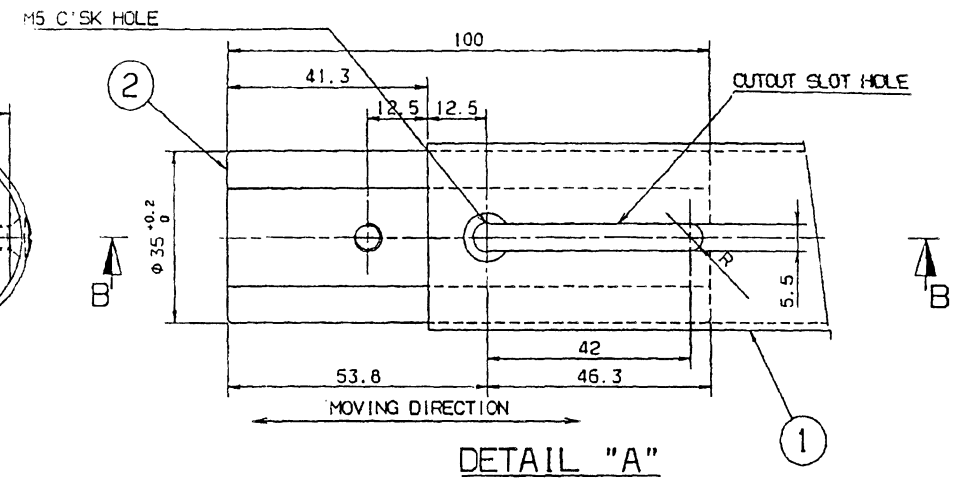
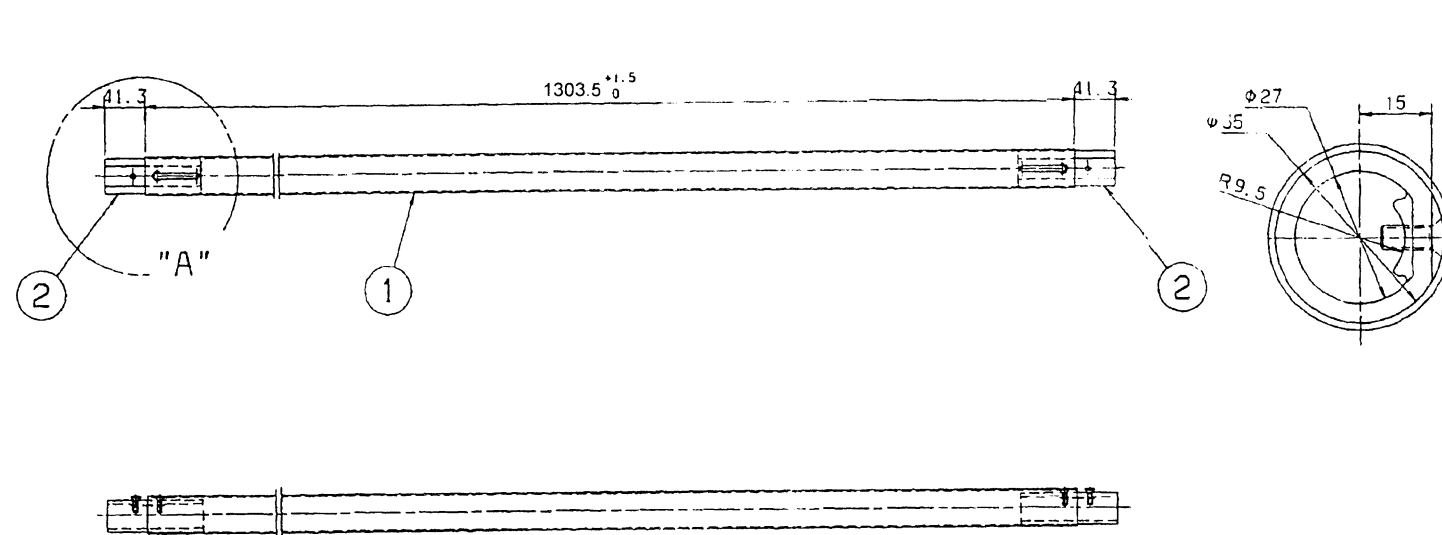
THIS DOCUMENT IS THE EXCLUSIVE PROPERTY OF BEML & CONTAINS CONFIDENTIAL INFORMATION. THIS DOCUMENT OR ITS CONTENTS SHALL NOT BE USED, REPRODUCED OR DISCLOSED IN WHOLE OR IN PART WITHOUT PRIOR WRITTEN PERMISSION OF BEML. THIS DOCUMENT & ALL ITS COPIES SHALL BE RETURNED TO BEML ON DEMAND. DRAWING RELEASED FROM PLT, PHYSICAL SIGNATURE NOT REQUIRED

GRADE No.	VALUE	SYMBOL
NT1	0.025	
NT2	0.05	
NT3	0.1	
NT4	0.2	
NT5	0.4	
NT6	0.8	
NT7	1.6	
NT8	3.2	
NT9	6.3	
NT10	12.5	
NT11	25	
NT12	50	
ROUGHNESS		

NT1	NT2	NT3	NT4	NT5	NT6	NT7	NT8	NT9	NT10	NT11	NT12

ALT NO	ECN NO/CHANGES	DATE	BY	CHKD	APPD

MACHINING DEVIATIONS FOR LINEAR DIMENSIONS	RANGE	0 - 6	6 - 30	30 - 120	120 - 315	315-1000	1000-2000	2000-4000	ABOVE 4000	RA
TOLERANCE		±0.1	±0.2	±0.3	±0.5	±0.8	±1.2	±2	±3	~
FOR DIMENSIONAL TOLERANCES OF SHEET METAL PARTS AND WELDED STRUCTURES, REFER STD. RD-227										
UNSPECIFIED TOLERANCE FOR LINEAR AND ANGULAR DIMENSIONS REF. IS 2102 (PT-1) (MEDIUM)								QUALITY OF WELD JOINTS REF. RD 230 MEDIUM		
VALUES OF SURFACE TEXTURE SHALL BE AS PER COMPANY STD DS. 1012.C								STATUS		
WELDING SHALL BE CARRIED OUT AS PER IS. 9595-96								PRODUCTION		



UNCONTROLLED

NOTE:

1. ASSEMBLY SHALL CONFORM TO PTS DOC. No. GR/TD/3015.
2. THE FIRST REMOVAL PREVAILING TORQUE OF NYLOK IS 3.5 kg.cm FOR M5 SCREW.

SL.No.	QTY	PART / STOCK No.	DESCRIPTION	SIZE	COMPANY STD./I.S	Wt. (Kg)
3	4	RFS8160516	HEX. SOCKET RAISED CSK HEAD SCREW WITH PRE APPLIED NYLOK BLUE PATCH	M5x16	IS: 7486-2005 FOR HEX SOCKET M4 HEAD IS: 6761-94 / MATL: IS: 1367-(P14)-84, GR-A2-70	
2	2	909-29054-02	JOINT, PIN	Ø35	SUS 304	
1	1	909-29054-01	PIPE	Ø38x1.5THK	SUS 304	
PRODUCT: DMRC BG METRO CARS						
REF. DRG: -						
MATERIAL: -						
HEAT TREAT: -						
SURFACE TREAT: -						
TITLE: GRAB RAIL (N)						
APPD: <i>[Signature]</i>						
REVD: <i>[Signature]</i>						
CHKD: <i>[Signature]</i>						
DRWN: PURUSHOTHAMAN						
SCALE: NTS						
SHEET: 1 OF 1						
Wt. (Kg): -						
ORG No: 909-29054						
ALT: -						

BEML LIMITED

909-29054